

COMPANY PROFILE

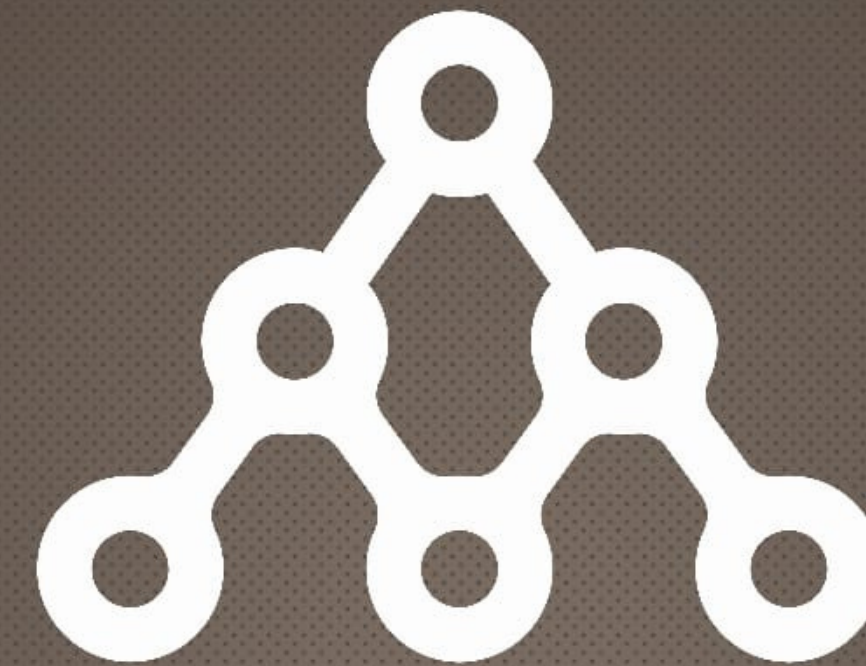
PT. ASHA MITRA NUSANTARA

OFFICE:

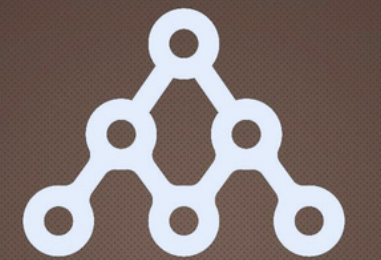
Bintaro Trade Center, Blok B2 no 11-12
Bintaro Jaya, Sektor 7,
Tangerang - Banten

CONTACT US

Phone : 021 - 35296572
Email : friets@ashamitranusantara.com
webside : www.ashamitranusantara.com



asha
mitra nusantara



asha
mitra nusantara

The Scope

PT. ASHA MITRA NUSANTARA

AMN has been established on 25 Februari 2020,
Our based on South Tangerang City, Banten Provence in Indonesia.

The Company Business scope, refers to the Governance Business Clasification (KBLI) are :

- Aktivitas Penunjang Pertambangan dan Penggalian Lainnya (KBLI 09900)
- AKtivitas Penunjang Pertambangan Minyak Bumi dan Gas Alam (KBLI 09100)
- Pembuatan/Pengeboran Sumur Air Tanah (KBLI 42218)
- Pengusahaan Tenaga Panas Bumi (KBLI 06202)
- Perdagangan Besar, Semen, Kapur, Pasir dan Batu (KBLI 46634)
- Penggalian Batu Hias dan Batu Bangunan



asha
mitra nusantara

More About PT. ASHA MITRA NUSANTARA

AMN focusses on **Drilling Services Solution**

We provide the best services for :

- Exploration Drilling
- Water Well Drilling
- Reverse Circulation Drilling
- Horizontal Drilling
- Blast Hole Drilling
- Drill Core

We are committed to prioritizing, the Health, Safety and Environmental aspects of our day by day operations to achieve production goals and We do under Good and Clean Corporate Governance.

We are supported by professional and experienced team, having high capabilities and skill set in each role.



Vission & Mission

VISSION

To be a trustful partner of our Clients and Business Partners, by creating excellent services and adding values for them to achieve their business goals , to be a trustful work space for our Employees by caring and having capabilities to grow together, and to be trustful of our Community and Environment by conducting business as a responsible corporate citizen.

In Mining, Geothermal, CBM and Oil and Gas Industry We want to be the very best at anything We do. To understand the needs of our Clients and Business Partners and assist them to achieve their goals by providing the best possible Drilling Services and HSE Management”.

MISSION

“To provide professional technical drilling and management services in Mining, Geothermal, CBM and Oil & Gas Industries throughout Asia Pacific”, the services that meet and exceed Clients and Business Partners expectation regarding productivity, safety and sustainability.

The Leader



SIEGFRIETS MERZYLINO PANGEMANAN

The Founder and President Director of PT. ASHA MITRA NUSANTARA.

Started his career in Oil and Gas Industry since 1996, after graduated from Technincal Industry, Indonesian Institute Technology, in 1995.

He has more than 26 years of his career in this industry, started with PT. Dimas Drillindo as the General Manager for Work over Project located in Caltex, Duri Riau (2003 - 2012), then continued his carrier to PT. Brothers Energy (2013 - 2015), as the Operation Manager Drilling Project located in Geodipa Energy Dieng, Central Jawa. Since 2015, he continued his carrier in several Oil and Gas Companies, i.e PT. Andam Resources Nusantara, Stock Bridge Budong Budong. In 2020, started his own company, PT. Asha Mitra Nusantara.



MARIA LEONORA

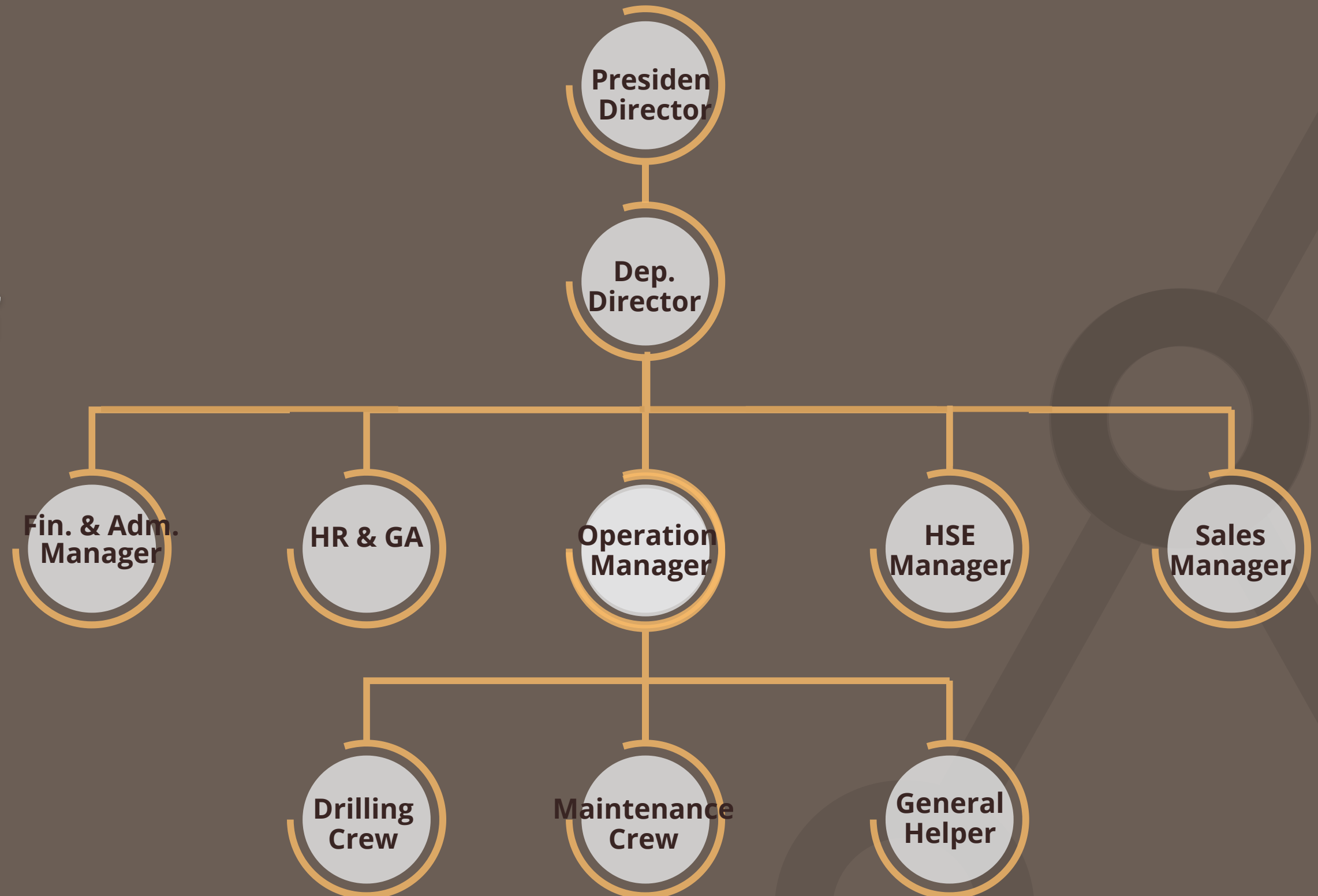
Co-Founder and Deputy Director of PT. ASHA MITRA NUSANTARA.

Graduated from Gadjah Mada University, Bachelor degree in Physics Science, and then earned her Master Degree in University of Indonesia major in Strategic Management.

Started his professional career since 1998, and after more than 25 years in business and services, in 2020 made her own company, PT. Asha Mitra Nusantara.

Organizational Chart

- AMN has a Flat Organizational Chart, it describes not only the structure of the Company, but also how the Company executes its strategy.
- AMN keeps its Organization small, has fewer layer of management and fewer job classification, in aiming to maximize customer values by using fewer resources.
- AMN only hires professional, skilled-full and talented people, empowers them and creates work circumstances of collaboration, innovation and creativity.
- We collaborate with external resources, outsourcing partners for non-vital business functions, so the Company may focus on its core competencies.



Our Values

1

Committed to the Company's responsibility of Health, Safety and Environmental (HSE).

- Complies with HSE Policy and Procedure contained in PTAMN drug and alcohol policy.
- Identifies hazard risk and control along with immediate action.
- Provides preventive action aimed at Zero Accident level.
- Cooperates closely with Client and community in accordance with HSE matters.

2

Works professionally, Keep its on time performance and manage cost effectively.

- Carries out its contract obligations in compliance with Client expectations and AMN's own standard of professional values.
- Performs work in timely and cost effective manner.
- Determines objectives and sets targets of production and safety to optimize company performance.
- Embraces a policy of continual improvement through new technology, methods and equipment.

3

Acts with high integrity, trustful and respectful

- Communicate PTAMN's vision, mission and value.
- Implement PTAMN's values in order of decision making and action.
- Believes and relies on commitment, trust and appreciation between employee and management.
- Give priority to PTAMN's objective and interest beyond self or team interest.

4

Builds strong & visible leadership and good teamwork.

- Continually develops employee leadership skills as well as rewarding and providing opportunity for all employees to achieve their full potential.
- Has a strong commitment to attract and retain qualified employees and place the right person on the right job.
- Carries out effective communication between colleagues and provides for feed back to improve company performance.
- Accumulates knowledge, inspiration and problem solving skills by investigating all issues or concerns raised by its employees or Clients.



asha
mitra nusantara

Product & Services

AMN is committed to deliver fully and customized drilling & blasting services for its Clients and Business Partners, by providing a wide-range of drilling machines type required by the mining industry; drilling for coal, mineral and Quarries need.

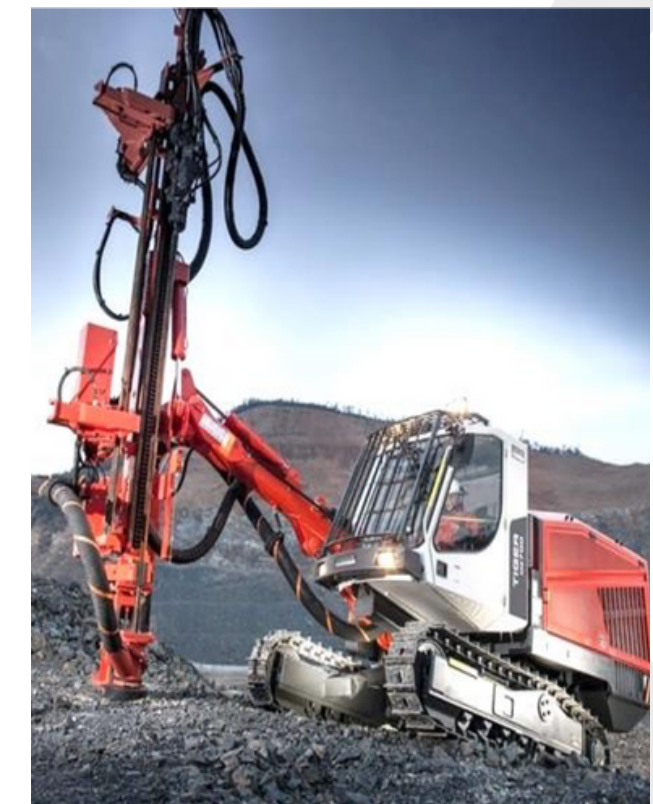
Rotary Drill



DTH Drill



Top Hammer Drill



AMN is very selective in choosing crucial equipments i.e drill rigs, only relies on best equipments from reputed brands. This is a part of the Company's commitment to meet and exceed the Clients and Business Partners expectations, regarding productivity, safety and sustainability.



asha
mitra nusantara

Our Clients & Partners

Many year experiences in this industry, both the company and its leaders have achieved extensive collaboration with all stakeholders in this industry.





Our Experiences

Many year experiences in this industry, both the Company and the People have succeeded in building technical expertise. These capabilities still continuing growing along with the Company's commitment to make continuous effort to improve and innovate in building it's existence in this industry.





THANK YOU

“if it is not safe, don’t do it”

“make it safe, then do it”

“no more fatalities”

